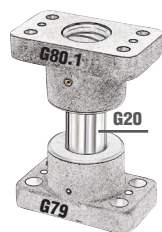


Flange Cast Bush - Rectangular

Steel Type

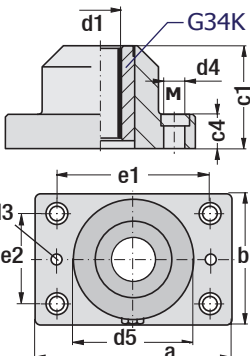
Code: **G80.1**



G20 + G79 + G80.1
Set as per request



Order: **G80.1** x d1



Steel Type

Code: **G80.1**

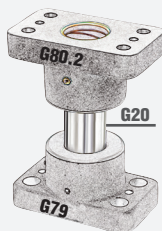
Upper and lower parts of flange cast bushes have been machined **G34K Guide Bush** and grease fitting have been added.

d1	a mm	b mm	c1	c4	d3 Pin	d4 mm	∅ d5	e1	e2	M
40	130	80	77	30	∅10	13	70	95	45	12
50	160	96	95	35	∅10	15	83	118	55	14
63	180	110	120	35	∅12	17	94	132	62	16
80	215	130	120	40	∅14	21	112	160	75	20

Flange Cast Bush - Rectangular

Bronze Type

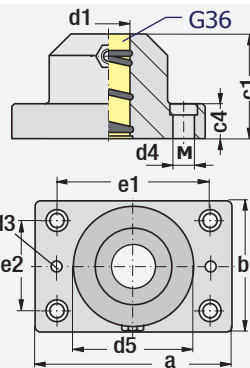
Code: **G80.2**



G20 + G79 + G80.2
Set as per request



Order: **G80.2** x d1



Bronze Type

Code: **G80.2**

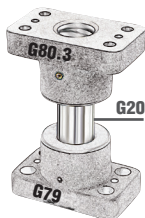
Upper and lower parts of flange cast bushes have been machined **G36 Guide Bush** and grease fitting have been added.

d1	a mm	b mm	c1	c4	d3 Pin	d4 mm	∅ d5	e1	e2	M
40	130	80	77	30	∅10	13	70	95	45	12
50	160	96	95	35	∅10	15	83	118	55	14
63	180	110	120	35	∅12	17	94	132	62	16
80	215	130	120	40	∅14	21	112	160	75	20

Flange Cast Bush - Rectangular

Cast Type

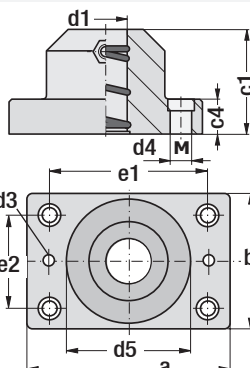
Code: **G80.3**



G20 + G79 + G80.3
Set as per request



Order: **G80.3** x d1



Cast Type

Code: **G80.3**

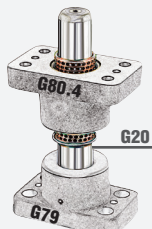
Upper and lower parts of Flange cast bushes have been machined inner hole has been machined as cast bush bearing.

d1	a mm	b mm	c1	c4	d3 Pin	d4 mm	∅ d5	e1	e2	M
40	130	80	77	30	∅10	13	70	95	45	12
50	160	96	95	35	∅10	15	83	118	55	14
63	180	110	120	35	∅12	17	94	132	62	16
80	215	130	120	40	∅14	21	112	160	75	20

Flange Cast Bush - Rectangular

Ball Cage Type

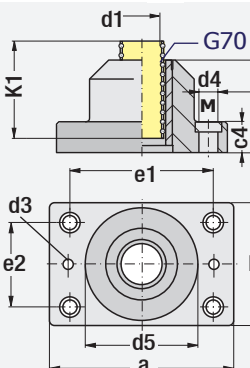
Code: **G80.4**



G20 + G79 + G80.4
Set as per request



Order: **G80.4** x d1



Ball Cage Type

Code: **G80.4**

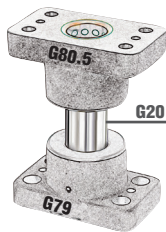
Upper and lower parts of flange cast bushes have been machined **G38 Guide Bush** and **G70 Ball Cage Bush** have been added.

d1	a mm	b mm	c1	c4	d3 Pin	d4 mm	∅ d5	e1	e2	K1	M
40	130	80	77	30	10	13	70	95	45	80	12
50	160	96	95	35	10	15	83	118	55	105	14
63	180	110	120	35	12	17	94	132	62	140	16
80	215	130	120	40	14	21	112	160	75	140	20

Flange Cast Bush - Rectangular

Self-Lubricating Type

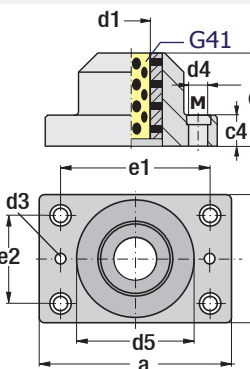
Code: **G80.5**



G20 + G79 + G80.5
Set as per request



Order: **G80.5** x d1



Self-Lubricating Type

Code: **G80.5**

Upper and lower parts of flange cast bushes have been machined **G41 Self-Lub. Guide Bush** have been added.

d1	a mm	b mm	c1	c4	d3 Pin	d4 mm	∅ d5	e1	e2	M
40	130	80	77	30	∅10	13	70	95	45	12
50	160	96	95	35	∅10	15	83	118	55	14
63	180	110	120	35	∅12	17	94	132	62	16
80	215	130	120	40	∅14	21	112	160	75	20